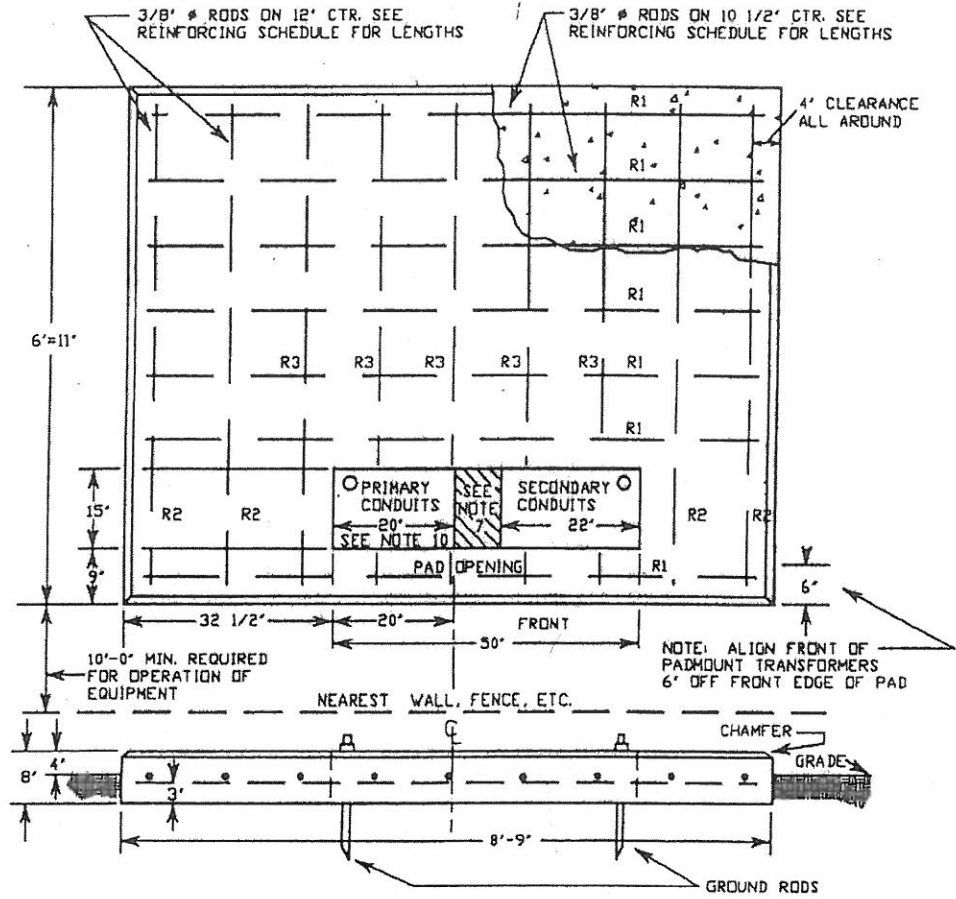


CONCRETE PAD TO accommodate 75 thru 500 KVA 12.5KV AND 34.5KV LOOP FEED PADMOUNT TRANSFORMER



NOTES:

1. ALL CONCRETE TO BE 1:2:4 MIX.
ALL HORIZONTAL SURFACES TO HAVE SMOOTH TROWEL FINISH.
ALL VERTICAL SURFACES ABOVE GROUND LINE TO HAVE RUBBED FINISH.
ALL CHAMFERS TO BE 1"-45" UNLESS NOTED OTHERWISE.
2. MAX. WT. OF TRANSFORMER - 14,000#
3. VOLUME CONCRETE REQUIRED 1.4 CU. YD.
4. REINFORCING SCHEDULE:

MKD	QUAN	SIZE
R1	7	3/8" # @ 8'-3"
R2	5	3/8" # @ 6'-5"
R3	4	3/8" # @ 4'-8"
TOTAL 3/8" # RODS = 108'-6"		
5. ALL BACKFILL IN DITCHES UNDER PAD SHALL BE FIRMLY TAMPED BEFORE PAD IS POURED.
6. ONE PRIMARY CONDUIT REQUIRED FROM PAD TO BASE OF RISER POLE, MIN. 4" RIGID STEEL, PVC PLASTIC SCHEDULE 40 OR PLASTIC ENCASED IN CONCRETE AS SPECIFIED FOR EACH PROJECT. (SECOND CUSTOMER CONDUIT IS OPTIONAL). MIN. 5" CONDUIT REQUIRED FOR 34.5KV.
7. NO CONDUITS OR CONCRETE TO BE LOCATED IN SHADED AREA OF PAD OPENING.
8. CUSTOMER TO FURNISH AND SHALL INSTALL 1 1/4" CONDUIT FOR CT. METERING AT LOCATION SPECIFIED BY SWEPCO, IF REQUIRED.
9. SWEPCO TO FURNISH 2-8" GROUND RODS.
10. MIN. 5" CONDUIT REQUIRED FOR 34.5 KV.

REV. 3 DATE 05/03/2000

FIGURE 3.7